

ROCHELLE ROAD BRIDGE Demolition & Road Closure



FACT SHEET

TIMELINE

JANUARY 2024 – JANUARY 2025

- **Scope:** Rochelle Road bridge between Fairbrook Street and Stonebrook Street closed to all traffic, and Rochelle Road from MacArthur Boulevard to Story Road closed to thru traffic.
- **Project Start:** January 2024
- **Estimated Completion:** January 2025
- **Overall Cost:** \$15.2 Million
- **Project Contact:** Walt Thomas, City Engineer
(972) 721-2611 | wthomas@cityofirving.org

BACKGROUND

As part of the larger \$15.2 million Embassy Channel Drainage project, Rochelle Road bridge between Fairbrook Street and Stonebrook Street will be demolished and closed to all traffic in early January 2024. Work will last about one year, weather permitting.

The Rochelle Road Bridge Reconstruction Project Includes

- Widening and deepening the channel
- Installing a 10'x7' box culvert in the channel under Rochelle Road
- Lowering a 20-inch water line
- Lowering a 15-inch sewer line
- Construction of a clear-span bridge

FREQUENTLY ASKED QUESTIONS

- **When was this bridge and channel built?**
In 1962, the same time the houses along the channel were built.
- **Why is this being done?**
The stormwater drainage system is being enlarged as part of the MacArthur Boulevard Road-to-the-Future Project. The current stormwater pipes and Embassy Channel downstream need to be improved to carry the increased flow.
- **Why did the city wait so long to fix it?**
The city needed to improve the Embassy and Delaware Channels south of SH 183 before deepening and widening the Embassy Channel north of SH 183.
- **What is the benefit to residents and businesses?**
The benefit is 272 houses and businesses will be removed from the 100-year flood risk. Lowering the channel allows for future drainage improvements to reduce flooding and protect 100 or more structures north of Rochelle Road. The project so improves capacities at Weathered Street and Rochelle Road bridges from two-year to 100-year storm capacities.
- **What work will need to be done on Embassy Channel after this?**
The next quarter of Embassy Channel to the north needs to be improved; however, the improvements are not scheduled or funded at this time.
- **What is the detour plan?**
The official detour will be the east- and westbound Airport Freeway (SH 183) frontage road (see map on back). 'Local Traffic Only' signage at Rochelle/MacArthur and Rochelle/Story will allow resident access to homes; however, cut thru traffic will use the detour.
- **How do residents stay updated on road construction?**
To receive Irving road construction updates to your inbox, sign up at CityofIrving.org/Join AND/OR bookmark CityofIrving.org/Rochelle AND/OR follow the City of Irving on social media @TheCityofIrving. Road construction updates are also shared on the city website home page, City Briefs utility bill insert and monthly City Spectrum newspaper.



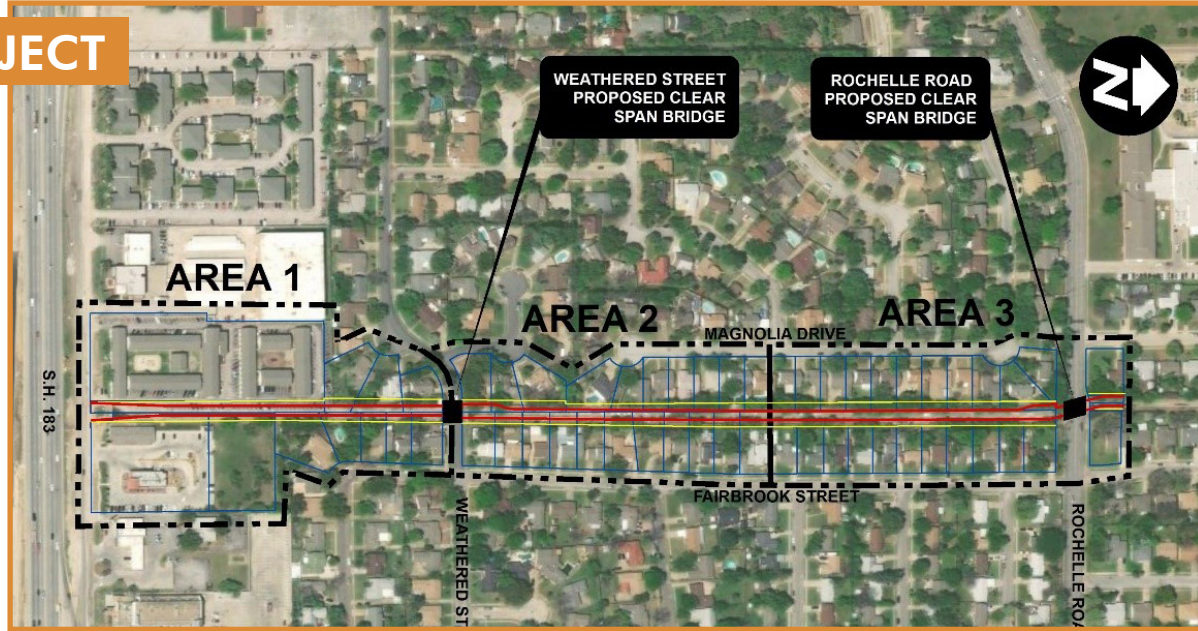
City of Irving **ROCHELLE ROAD BRIDGE**

FACT SHEET

SCOPE OF PROJECT

Rochelle Road bridge between Fairbrook Street and Stonebrook Street closed to all traffic and Rochelle Road from MacArthur Boulevard to Story Road closed to thru traffic.

- 60' wide drainage easement
- Lower channel 5 feet
- Two clear span bridges constructed
- 10'x7' concrete drainage boxes under Rochelle Road to MacArthur Boulevard



BENEFITS

- 272 homes and businesses protected from 100-year flood risk
- Lowering the channel allows for future drainage improvements to reduce flooding and protect 100 or more structures north of Rochelle Road
- Improves capacities at Weathered Street and Rochelle Road bridges from two-year to 100-year storm capacities

DETOUR MAP

Use the Airport Freeway (State Highway 183) frontage Road for east- and westbound traffic.

Local traffic only on Rochelle Road.

